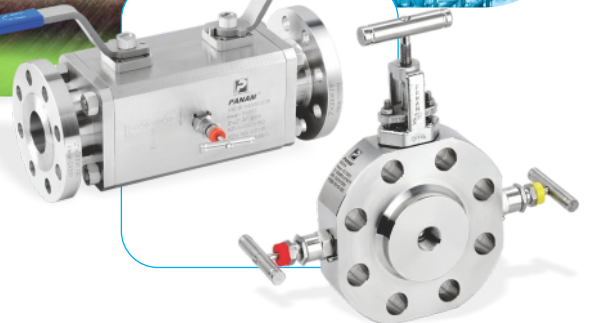




# Power to Control

## Instrumentation Fittings & Valves



+91 22 28315555



[www.panam.in](http://www.panam.in)



**PANAM**

Since 1998

# The Company



**PANAM**<sup>®</sup> has emerged as renowned name in Global market for “Instrumentation Fittings & Valves”. Since its inception in 1998 to present day, **PANAM**<sup>®</sup> has added new product every year and has broadened its product portfolio and its clientele base by supplying to potential customers worldwide. Key core values like Timely Delivery, Quality Consistency, Product Improvisation and after sales service has been instrumental in the phase wise evolution of company

Product portfolio includes Instrumentation Tube/Pipe Fittings, Valves includes Ball Valves, Needle Valves, Check Valves, Gauge Root Valves, Relief Valves, 2-3-5 Valve Manifolds for mounting precision instruments, Double Block and Bleed Valves, Pressure Regulators, Thermowells & accessories, Condensate Pots, Air Headers in various configurations etc.

Continuous improvement is the key to success, Customer feedback are taken with positive attitude and products are constantly groomed to a new quality and performance level to cope up with the competition.



# Infrastructure



**PANAM**® is having state of the art manufacturing facility span over an area of 65,000 sqft. With a fleet of CNC machines, VMC machines, Semi-Automatic Lath machines, High pressure test bench with SCADA control, Configuration centre for Transmitters and dedicated R & D Team.

R & D plays a vital role and is one of the pillar on which any Successful company stands. As evolution is a continuous process and change is always constant, Innovation & continuous improvement is the need of the hour. Research and Innovation has been the foundation of success at **PANAM**® and we strongly believe in keeping with par with new technology. R & D helps in offering customization of products as per client requirement adhering to international standards giving an edge over other manufacturer.

Over the year, the company has evolved from a product based company to a complete system solution provider. Over the coming years the entity of the company will attain state of the art operational efficiency for maintaining a competitive edge, with the advent increase in the utilization of its products in oil, gas and power sector.

Every new idea is rooted in the original scheme of things and individually too is as firmly rooted as original, this has led to a well balanced growth.

# Online Support



www.panamengineers.com offers a complete and through insight into **PANAM**'s product range, charting every product and possible development avenues as required by a customer and as per the standard range.

Spanning 300 web pages complete with data and specification of products along with drawings to help customer cut communication time and quicken the delivery process. The web pages are constantly updated with the latest research and development of product information. We share this information with customers, so that we can grow together and make the process of growth transparent.

### **Accessibility & traceability**

- Quick response to enquiries.
- Timely delivery schedules.
- Worldwide distribution set-up International quality.
- Raw materials procured are tested for quality and In-house laboratory tests determine the physical, chemical & heat endurance properties.
- Material test certificates are dispatched with each consignment individually making it easier for the customer to evaluate the quality.
- Each and every product is traceable as the heat, serial number and **PANAM**® hologram stamped on it.

# Products



## Tube Fittings

- Tube Fittings are available in Single & Double Ferrule Design.
- Tube Fittings are available in SS 316, Monel, Duplex, Hastalloys & Brass Materials.
- Variety of end connections, Male & Female NPT, BSPP, BSPT & 37° Flare.
- Maximum working pressure up to 10,000 psig. (689 bar).
- Size ranging from 1/16" to 2" OD and 3mm to 50mm OD.
- Low Torque.
- Leak tight connections, with standing high pressure.
- NACE certification available upon request.
- Heat code traceability



## 37° JIC Fittings (Flare Fittings)

- Flare Fittings are available in SS 316, Monel, Duplex & Hastalloys Materials.
- Variety of end connections, Male & Female NPT, BSPP, BSPT, 37° Flare, Swivel & JIC Swivel.
- Maximum working pressure up to 10,000 psig. (689 bar).
- Size ranging from 1/16" to 2"
- Leak tight connections, with standing high pressure.
- NACE certification available upon request.
- Heat code traceability



# Products



## Pipe Fittings

- Pipe Fittings are available in SS 316, Monel, Duplex & Hastalloys Materials.
- Variety of end connections, Male & Female NPT, BSPP, BSPT & Tube / Pipe Socket Weld.
- Maximum working pressure up to 10,000 psig. (689 bar).
- Size ranging from 1/8" to 2".
- NACE certification available upon request.
- Heat code traceability.



## High Pressure Pipe Fittings

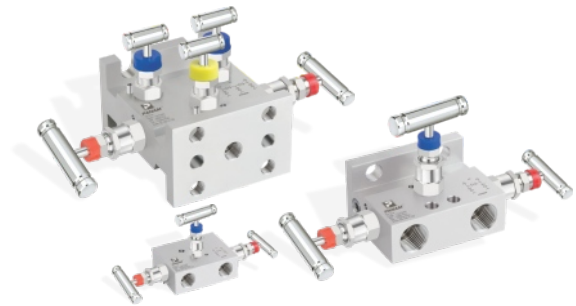
- High Pressure Fittings are available in SS 316, Monel, Duplex & Hastalloys Materials.
- Variety of end connections, Male & Female NPT, BSPP, BSPT, 37° Flare, Swivel, JIC Swivel & Tube / Pipe Socket Weld.
- Maximum working pressure up to 15,000 psig. (1034 bar).
- Size ranging from 1/16" to 2".
- Leak tight connections, with standing high pressure.
- NACE certification available upon request.
- Heat code traceability

# Products



## Weld Fittings

- Weld Fittings are available in SS 316, Monel, Duplex & Hastalloys Materials.
- Variety of end connections, Male & Female NPT, BSPP, BSPT & Tube / Pipe socket weld.
- Maximum working pressure up to 20,000 psig. (1379 bar).
- Size ranging from 1/16" to 2"
- Leak tight connections, with standing high pressure.
- NACE certification available upon request.
- Heat code traceability



## 2-3-5 Valve Manifolds

- Manifold Valves are available in SS 316, Monel, Duplex & Hastalloys Materials.
- Available in 2 Valves, 3 Valves and 5 Valves, in various configuration such as pipe to pipe, pipe to flange and flange to flange.
- Maximum working pressure up to 10,000 psig. (689 bar).
- PTFE standard gland packing, Alternate graphoil packing for high temperature. Max. temperature upto 538°C (1000°F).
- Non-Rotating vee tip / Ball tip provides repetitive & leak tight shutt-off.
- NACE certification available upon request.
- Heat code traceability.

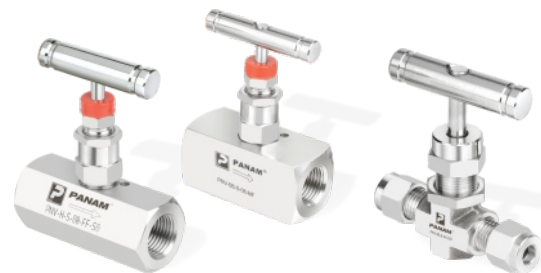


# Products



## Gauge Root Valves

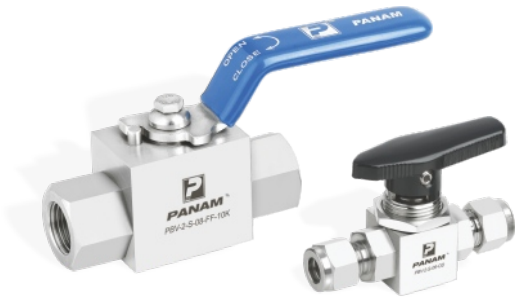
- Gauge Root Valves are available in SS 316, Monel, Duplex & Hastalloys Materials.
- Maximum working pressure up to 10,000 psig. (689 bar).
- Size ranging from 1/2" to 3/4".
- PTFE standard gland packing, Alternate graphoil packing for high temperature. Max. temperature upto 538°C (1000°F).
- Non-Rotating vee tip / ball tip provides repetitive & leak tight shutt-off.
- Available in soft seat.
- NACE certification available upon request.
- Heat code traceability.



## Needle Valves

- Needle Valves are available in IB, HB, HP, SB & Mini Series.
- Needle Valves are available in SS 316, Monel, Duplex & Hastalloys Materials in forged & bar stock construction.
- Variety of end connections - Male & Female NPT, BSPP, BSPT, ISO tapered pipe ends & **PANAM**® tube fittings.
- Maximum working pressure up to 20,000 psig. (1379 bar).
- Size ranging from 1/8" to 1"
- PTFE standard gland packing, Alternate graphoil packing for high temperature. Max. temperature upto 538°C (1000°F).
- Non-Rotating vee tip / Ball tip provides repetitive & leak tight shutt-off.
- NACE certification available upon request.
- Heat code traceability.

# Products



## Ball Valves

- Ball Valves are available in 2 and 3 T port & L port configurations.
- Ball Valves are available in SS 316, Monel, Duplex & Hastalloys Materials.
- Variety of end connections - Male & Female NPT, BSPP, BSPT & **PANAM**<sup>®</sup> tube fittings.
- Maximum working pressure up to 10,000 psig. (689 bar).
- Floating ball design ensures leak proof shut-off at high pressure.
- Size ranging from 1/8" to 2".
- Delrin, PTFE, PEEK & KEL-F seat available.
- Anti blow out internally loaded stem for safety.
- Panel mount and lever handle option available in selected sizes.
- NACE certification available upon request.
- Heat code traceability.



## Check Valves

- Check Valves are available in SS 316, Monel, Duplex & Hastalloys Materials.
- Variety of end connections - Male & Female NPT, BSPP, BSPT & **PANAM**<sup>®</sup> tube fittings.
- Maximum working pressure up to 6,000 psig. (414 bar).
- Size ranging from 1/8" to 1".
- Cracking pressure 1/3, 1, 5, 10, 25, 50, 75 & 100 psig.
- NACE certification available upon request.
- Heat code traceability.

# Products



## Relief Valves

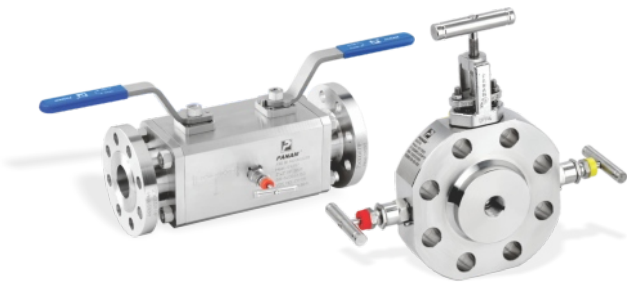
- Relief Valves are available in SS 316, Monel, Duplex & Hastalloys Materials.
- Variety of end connections - Male & Female NPT, BSPP, BSPT.
- Maximum working pressure up to 6,000 psig. (414 bar).
- Size ranging from 1/8" to 1/2" & 6mm OD to 12mm OD.
- Standard Orifice 4.8mm
- Relief pressure adjustable externally.
- Lock wire feature secures a given pressure setting.
- NACE certification available upon request.
- Heat code traceability.



## Filters

- Filters Valves are available in SS 316 & Brass Materials.
- Variety of end connections - Male & Female NPT, BSPP, BSPT.
- Maximum working pressure up to 6,000 psig. (414 bar).
- Size ranging from 1/8" to 1/2" & 3mm OD to 12mm OD.
- Safe union bonnet design for high pressure ratings.
- Filter element can be replaced without removing body from system.
- NACE certification available upon request.
- Heat code traceability.

# Products



## Double Block & Bleed Valves

- Double Block & Bleed Valves are available in SS 316, Monel, Duplex & Hastalloys Materials.
- Variety of end connections - Flange to Flange, Flange to NPT, NPT to NPT & Mono Flange.
- Maximum working pressure up to 6,000 psig. (414 bar).
- Size ranging from 1/2" to 3" - Class 150 to 2500.
- Ball seats material - PTFE (Virgin or Filled), PVDF, Nylon, PEEK & PCTFE.
- Bubble tight shutoff.
- Design to comply with requirements of ANSI /ASME 16:34.
- NACE certification available upon request.
- Heat code traceability.



## Swivel Gauge Adapters

- Swivel Gauge Adapters are available in SS 316, Super Duplex, Monel & Hastalloys Materials.
- Variety of end connections - Male & Female NPT, BSPP, BSPT.
- Maximum working pressure up to 6,000 psig. (414 bar).
- Gauge positioning enables easy viewing of the gauge in any direction through 360°.
- Silver plated swivel thread and bearing surface to prevent thread galling and maximizing re-make opportunities.
- NACE certification available upon request.
- Heat code traceability.



# Products



## Pressure Regulators

- Pressure Regulators are available in SS 316 & Brass Materials.
- Maximum working pressure up to 6000 psig. (414 bar).
- 1/4" NPT Inlet and outlet connection.
- Piston sensed design is safe and reliable.
- Adjustable stop limits maximum outlet pressure.
- NACE certification available upon request.
- Heat code traceability.



## Air Headers

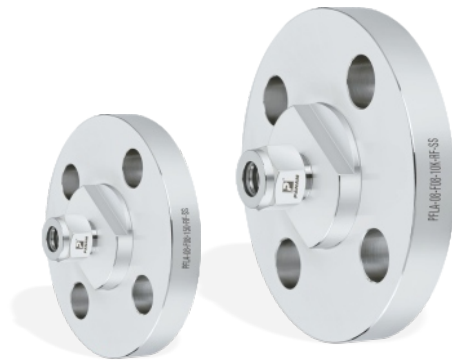
- Air Headers are available in SS 316 & Carbon Steel Materials.
- Variety of end connections - Threaded, Flanged, Socket Weld, Tapered & Straight.
- Maximum working pressure up to 6000 psig. (414 bar).
- Size ranging from 1/2 to 2" - Class 150 to 2500.
- All NPT thread will be as per ANSI B 2.1 & Socket weld will be as per ANSI B 16.11.
- Radiography testing & liquid penetrate testing of butt-welding joints as per ASME BPVC section V.
- Small thin design & light weight design allows you to combine with other valves in series for safe shutoff.
- NACE certification available upon request.
- Heat code traceability.

# Products



## Condensate Pots

- Condensate Pots are available in SS 316 & Carbon Steel Materials.
- Variety of end connections - Threaded, Flanged, Socket Weld.
- Maximum working pressure up to 6000 psig. (414 bar).
- Size ranging from 1/2 to 2" - Class 150 to 2500.
- All NPT thread will be as per ANSI B 2.1 & Socket weld will be as per ANSI B 16.11.
- Radiography testing & liquid penetrate testing of butt-welding joints as per ASME BPVC section V.
- NACE certification available upon request.
- Heat code traceability.



## Flange Adapters

- Flange Adapters are available in SS 316, Monel, Duplex & Hastalloy Materials.
- Variety of end connections - Threaded, Flanged, Socket Weld.
- Maximum working pressure up to 10,000 psig. (689 bar).
- Available in **PANAM**® tube fitting end connection up to 50mm in metric sizes & 2" in imperial sizes.
- Flange type meet ASME, DIN, EN and JIS standards. Full range of sealing faces including Flat Face, Rised Face, RTJ and Tongue and Groove.
- EN 10204 type 3.1B test certificates are supplied with materials.
- Heat code traceability.



***PANAM ENGINEERS LTD.***

203, Jaisingh Business Center, Parsiwada, Sahar Road, Andheri (East), Mumbai - 400 099. INDIA

Tel.: +91 22 2831 5555 / 57 / 58 • Fax.: +91 22 2831 5574.

Email: [sales@panamengineers.com](mailto:sales@panamengineers.com) • Website: [www.panamengineers.com](http://www.panamengineers.com) / [www.panam.in](http://www.panam.in)